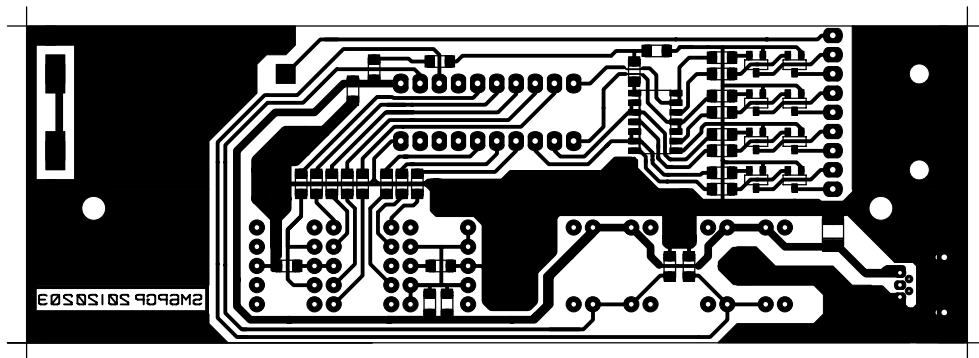
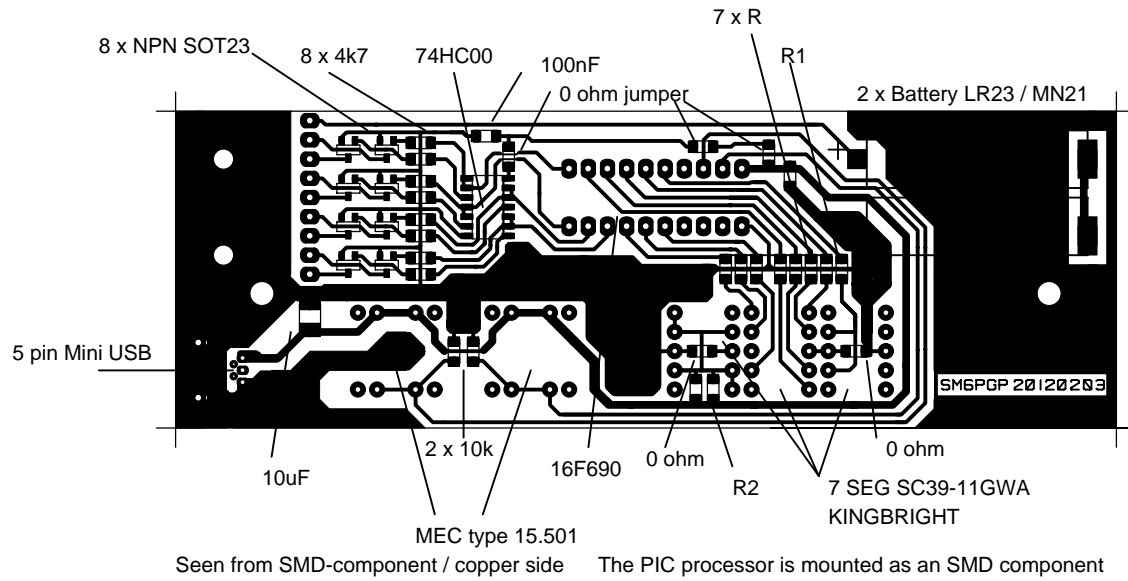


HP849xG/H Controller component placement



PART LIST

ELFA Distrelec part no

- 8 x NPN SOT23 , BC817 or similar
- 1 x 74HC00 SO14
- 8 x 4k7 ohm 1206
- 7 x 270 ohm 1206
- 1 x 120 ohm 1206
- 2 x 100 ohm 1206
- 2 x 10 k 1206
- 5 x 0 ohm jumper 1206
- 2 x 100 nF 1206
- 1 x 10 uF / 20V
- 1 x PIC16F690-I/P DIL20
- 2 x MEC 15.501
- 3(2) x SC39-11GWA, Kingbright
- 1 x Mini USB 5 pol
- 2 x LR23/MN21 12V Battery

Not important, take anything close....

- 73-793-58
- 35-650-09
- 75-500-79
- 42-709-97
- 69-255-49